

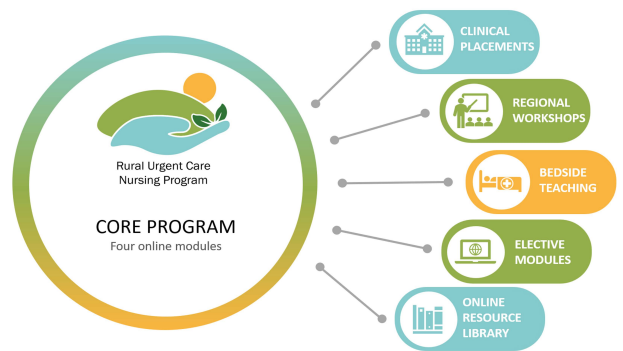


Rural Urgent Care Nursing Program



The Rural Urgent Care Nursing Capability Program (RUCN-CDP)

The RUCN-CDP is a Department of Health funded education program designed for nurses working in Victorian Urgent Care Centres. The program supports these clinicians to feel prepared and confident when working in urgent care and aims to standardise urgent care education across Victoria with content that explores evidence based practice for the provision of care in UCCs.



Eligibility

The program is open to all nurses who work in a public Victorian Urgent Care Centre. Participants must have support from their health service to participate. The program is primarily aimed at Registered Nurses however Enrolled Nurses, RIPRENS and Nurse Practitioners are welcome to enrol.

Benefits

- Free for all eligible nurses to participate.
- Self-scheduled learning with tailored personal development goals.
- The program does not require substantial release from a clinical roster or personal commitments.
- There is no travel to metropolitan Melbourne, all face-to-face elements are delivered locally.
- The program is designed to address the priorities and realities of nurses working in Victorian UCCs.
- Learners are supported by a team of Clinical Nurse Educators.
- The program is not assessed, learners are provided with self-assessment tools to measure their own progress.

Funding

The program is funded through the Department of Health and is completely free for all nurses and health services.



Program overview

The program is made up of online learning modules, face to face workshops and clinical placements which are all supported by a team of Clinical Nurse Educators and an online resource library.

Program element	Approx. time commitment	Description	Mode of delivery	Pre-requisite
Introduction module	1 hour	Program information and personal development plan	Online	EFT in a VIC public UCC
Module 1: Empowered Clinical Practice	8 hours	Non clinical skills including communication and empowerment	Online	RUCN-CDP Introduction Module
Module 2: Initial Assessment & Management	8 hours	Triage, primary and secondary survey	Online	RUCN-CDP core module 1
Module 3: The Deteriorating Patient	8 hours	Clinical deterioration	Online	RUCN-CDP core module 2
Module 4: Stabilisation and Transfer	8 hours	Stabilisation and preparation for transfer	Online	RUCN-CDP core module 3
Elective Modules	1 - 7 hours	Optional elective modules in specialist areas	Online	Complete all four core RUCN-CDP online learning modules
Face-to-face Workshop	8 hours	Consolidate learnings from modules 1 to 4	Face-to-face	
Clinical Placements	3 - 5 shifts	Placement in a large UCC or regional ED for eligible nurses.	Face-to-face	Complete all four core RUCN-CDP online learning modules <i>Note: Further eligibility criteria applies</i>
Bedside Teaching	1-2 shifts	A RUCN CNE will come to your UCC and, in consultation with your health service management, provide on site education based on the core module content.	Face-to-face	Complete all four core RUCN-CDP online learning modules



Core online modules

The online program consists of an introduction, followed by four core modules which shadow the patient journey in the UCC. Each of the four modules takes around eight hours to complete, depending on individual learning style. Learners have up to six months to complete each module, although we highly recommend completing them within six weeks. The core modules are:

Module	Topics
Introduction module	<ul style="list-style-type: none"> • Introduction to the RUCN-CDP and what to expect • Develop your own Personal Development Plan
Module 1: Empowered Clinical Practice	<ul style="list-style-type: none"> • Introduction to rural health • Complexities of the urgent care setting • Ethical conflicts with dual relationships • Clinical empowerment • Fundamentals of communication & leadership • Decision making and evidence-based practice • Self management and mindful practice
Module 2: Initial Assessment and Management	<ul style="list-style-type: none"> • History taking • Primary survey assessment • Introduction to triage • Special patient populations • Adult & paediatric secondary assessment • Documentation
Module 3: The Deteriorating Patient	<ul style="list-style-type: none"> • Elements of clinical deterioration • When things go wrong • Barriers and enablers of clinical deterioration - Human factors, Environmental factors & Patient factors • Compensation and decompensation • Special populations
Module 4: Stabilisation and Transfer	<ul style="list-style-type: none"> • Principles for safe transfer • Stabilisation and preparation for transfer • Paediatric, infant and perinatal retrieval • Mental health patient considerations for transfer • Collaborative practice • Debriefing and psychological safety • Resilience in healthcare



Further elements

Once learners have completed all four core online learning modules, they can access further elements of the program including online elective modules, a face-to-face workshop and a clinical placement.



Online elective modules

The RUCN-CDP optional elective modules are designed to extend learner knowledge, competence and capability on a variety of topics. Learners can choose to complete any of the following topics and they do not need to be completed in order:

- Acute assessment and management of burns
- Clinical support & education program
- Care of the older adult
- Care of the trauma patient
- ECG interpretation
- Snake bite envenomation
- Inclusive care (LGBTIQ+, Indigenous , religion and migrant health)
- Maternity presentations in the UCC
- Recognising and managing anaphylaxis
- Recognising the sick child
- Substance misuse
- Thunderstorm asthma



Bedside teaching

A RUCN Clinical Nurse Educator will plan to come to your UCC for 1-2 days to engage learners whilst they are on shift, providing tailored clinical support and assist the learner in applying the theoretical content from the online core modules at the bedside in their everyday nursing practice.

This dynamic, flexible model of education will complement the current RUCN workshop and clinical placement programs being delivered across the state to provide a more tailored approach to education delivery. This enables the RUCN-CDP CNE team members to provide learner and site-specific, flexible, dynamic face-to-face education and will be coordinated through your health service management.



Online resource library

This online resource library includes relevant clinical resources and tools for Nurses working in UCCs including clinical practice guidelines, clinical resources, videos, podcasts and wellbeing resources



Rural Urgent Care
Nursing Program



Face-to-face workshops

Our RUCN-CDP Nurse Educators run face-to-face workshops throughout rural and regional Victoria which consolidate the learning from the four core online modules. Any nurse who has completed the four core modules is eligible to attend a workshop. The full day workshop explores:

- Fundamentals of communication
- Initial assessment and management
- Introduction to triage
- Clinical deterioration
- Stabilisation and preparation for transfer

The workshops are completely free to attend and include catering and a chance to network with learners from other health services in your area. Workshops are scheduled regularly according to learner demand.



Clinical placements

The RUCN-CDP has a limited number of funded clinical placements available to learners each year. The clinical placement component is the last stage of the core program and is designed to help expand knowledge and consolidate the learnings from the core program. Placements aim to provide nurses with the opportunity to gain a deeper understanding of acute emergency presentations and offer greater exposure to clinical practice in the urgent and emergency care setting. Clinical placements are:

- Between three and five shifts
- Hosted by a large UCC or regional ED
- Completely free for Nurses and also include funding for travel and accommodation
- Supported by the RUCN-CDP Clinical Placement Coordinator and the RUCN-CDP Nurse Educators.

Eligibility criteria applies and priority will be given to nurses working in UCCs with limited access to education, training and on-site clinical supervision.

How to apply

If you work in a Victorian public Urgent Care Centre, you can apply to enrol anytime by scanning the QR code or apply online at <https://www.alfredemergency.org/ruralurgentcarenursing/coreprogram>

Contact us

If you have any queries about the program please contact the team on 0419 169 761 or rucncdp@alfred.org.au

